

**Geography**  
**Higher level and standard level**  
**Paper 2 – resources booklet**

Wednesday 20 May 2015 (morning)

---

**Instructions to candidates**

- Do not open this resources booklet until instructed to do so.
- Use the resources as appropriate to the questions in paper 2.

**Option B — Oceans and their coastal margins**

4. The photograph shows an actively eroding cliff.



[Source: © International Baccalaureate Organization 2015]

**Option C — Extreme environments**

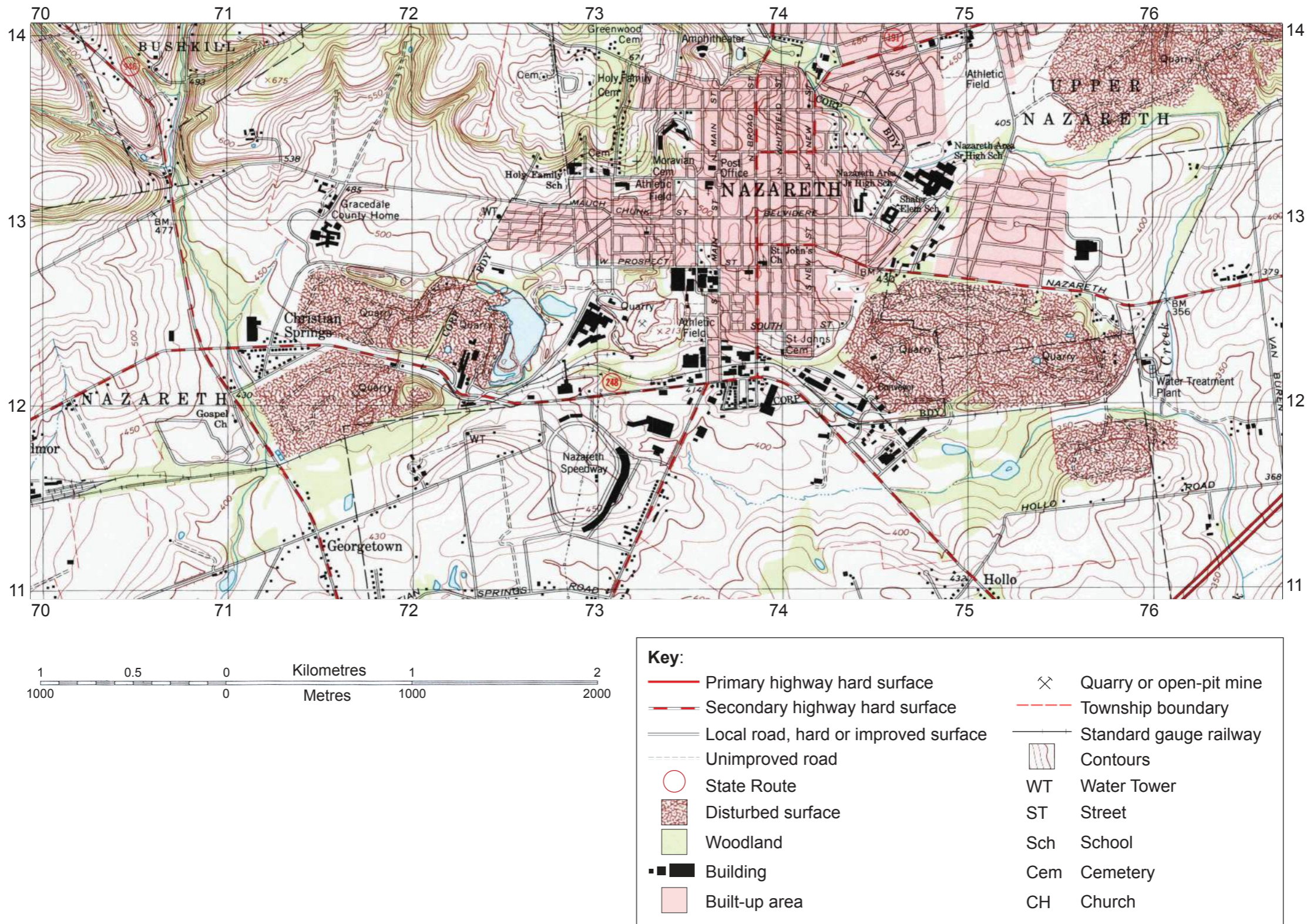
5. The photograph shows a feature formed by erosion in the Atacama Desert in Chile.



[Source: © International Baccalaureate Organization 2015]

Option G — Urban environments

13. The map shows Nazareth, an urban area in Pennsylvania, USA. The scale of the map is 1:24 000.



[Source: [http://www.usgs.gov/visual-id/credit\\_usgs.htm](http://www.usgs.gov/visual-id/credit_usgs.htm)]